

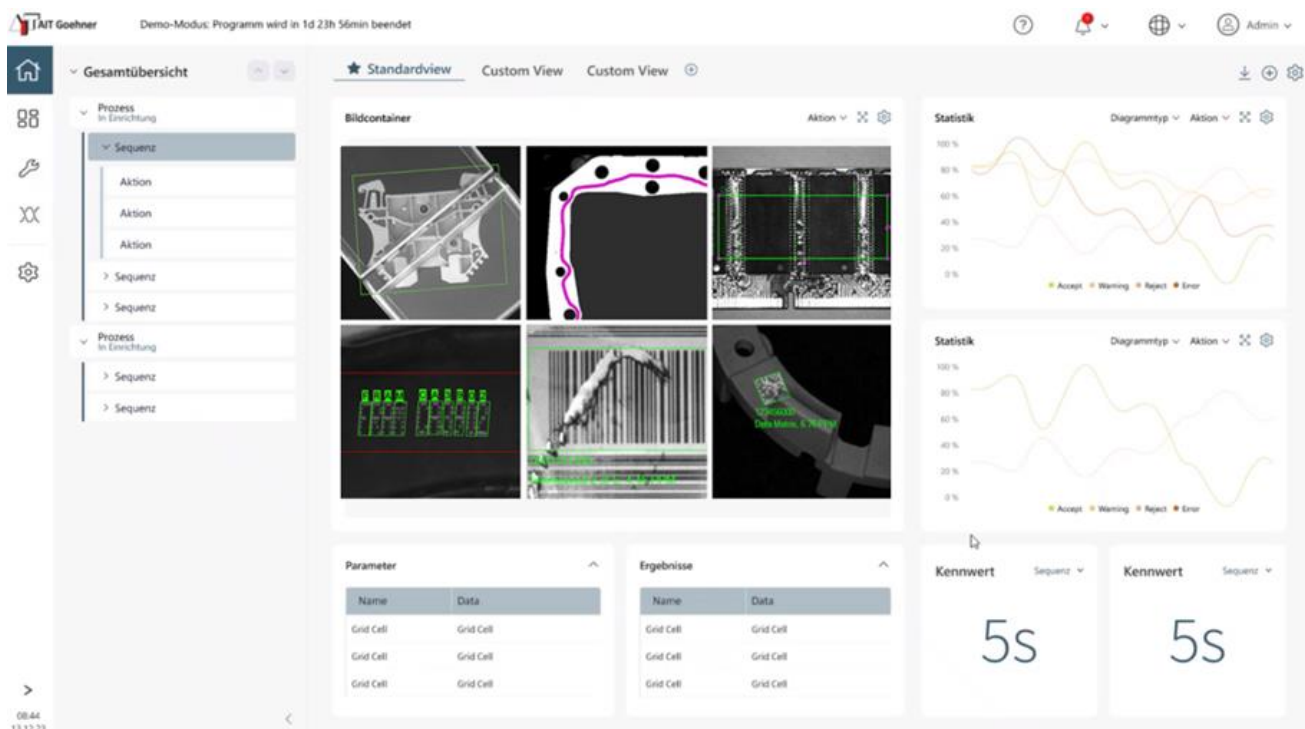
AIT EasyPlus: The universal platform for machine vision

With **AIT EasyPlus**, you can seamlessly integrate a wide variety of hardware for a wide variety of tasks. Everything is set up, managed and controlled in a central system - for perfect interaction between all components. No matter how complex your inspection system is - consisting of various subsystems - AIT EasyPlus controls it centrally. Whether rule-based test sequences or deep learning-supported processes, AIT EasyPlus keeps everything under control.




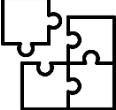

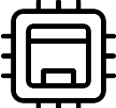
AIT EasyPlus supports the technologies of leading manufacturers such as line scan cameras, profile sensors, area scan cameras, hyperspectral cameras, thermographic cameras, TimeOfFlight cameras, SnapShot 3D cameras and ShapeFromShading systems.

Our framework is compatible with leading machine vision libraries such as Cognex VisionPro and MVTec Halcon and enables the integration of the most common industry protocols and databases.

AIT EasyPlus: flexible, scalable, manufacturer-neutral, modular!



All features and benefits:

	<p>FRAMEWORK</p>	<p>The framework provides an ideal basis that includes a runtime environment, various libraries and several powerful components.</p>
	<p>ADAPTABLE</p>	<p>Changing tasks and dynamic requirements demand a flexible software architecture. Changes must be possible at short notice without fundamentally modifying the existing structure of the software.</p>
	<p>SCALABLE</p>	<p>Thanks to its scalability, the software can be tailored precisely to the application and cope with increasing performance requirements at hardware and software level.</p>
	<p>MANUFACTURER-NEUTRAL</p>	<p>The range of tasks requires the use of different image generation techniques. The integration of manufacturer-independent software and hardware components is of fundamental importance.</p>
	<p>MODULAR</p>	<p>The existing modules form a self-sufficient structure that can be used repeatedly. In addition, defined interfaces allow the user to integrate additional modules as required.</p>
	<p>HARDWARE INTEGRATION</p>	<p>Whether it is sensors, actuators, measuring devices or other test equipment, AIT EasyPlus can integrate these components seamlessly.</p>

For individual consultation, please contact us at sales@AIT.de