



All-in-one vision system meets all your vision needs

Key Features:

- High speed
- High resolution
- High flexibility

Lead with speed! Setting the pace of machine vision

This advanced vision system provides a powerful, yet easy-to-use, solution for automated inspections. Embedded with a full set of robust rule-based tools and innovative edge learning technology, In-Sight 3800 solves a range of manufacturing applications, from defect detection and assembly verification to character reading and more.

Run more inspections in less time

Maximize throughput with high-speed processing and quick setup.

Improve the accuracy of your results

Generate high-resolution, high-contrast images that detect even the most subtle defects.

Seamlessly scale your solution

Create jobs in a common software platform that supports scalability across In-Sight products and offers both point-and-click and advanced setup options.

Comprehensive toolset solves tasks of varying complexity

Integrating AI and rule-based tools in a single vision system, the In-Sight 3800 addresses a wide range of error-proofing applications. The tools can be used individually for simple jobs or combined to automate more challenging problems.

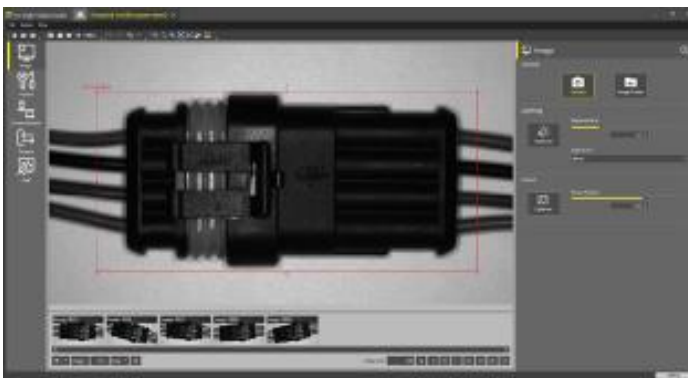


image: connector check

AI tools

The In-Sight 3800 is embedded with powerful edge learning tools that leverage AI technology to process images on device, or “at the edge” of where the data is collected, to deliver accurate results in real time. Edge learning tools are easy-to-use and simple to deploy with example-based training and no experience needed.

Rule-based vision tools

In-Sight 3800 is also equipped with an extensive library of industry-proven traditional vision tools that allow you to measure distance and blobs, count pixels, and patterns, read codes, guide robots, perform math and logic, and more. These tools run 2X faster on In-Sight 3800 than previous generation products, so you can solve applications more quickly and accommodate faster line speeds.

Common software platform offers flexible development options

In-Sight Vision Suite software is common across all In-Sight products and includes two programming environments — spreadsheet and EasyBuilder — which allows you to seamlessly scale your solution as your business needs evolve.

Web-based HMI offers real-time application testing and optimization

The In-Sight 3800 provides access to a web-based human-machine interface (HMI) that enables runtime visualization. From the HMI, users can view inspection results and modify setup parameters to optimize their application.